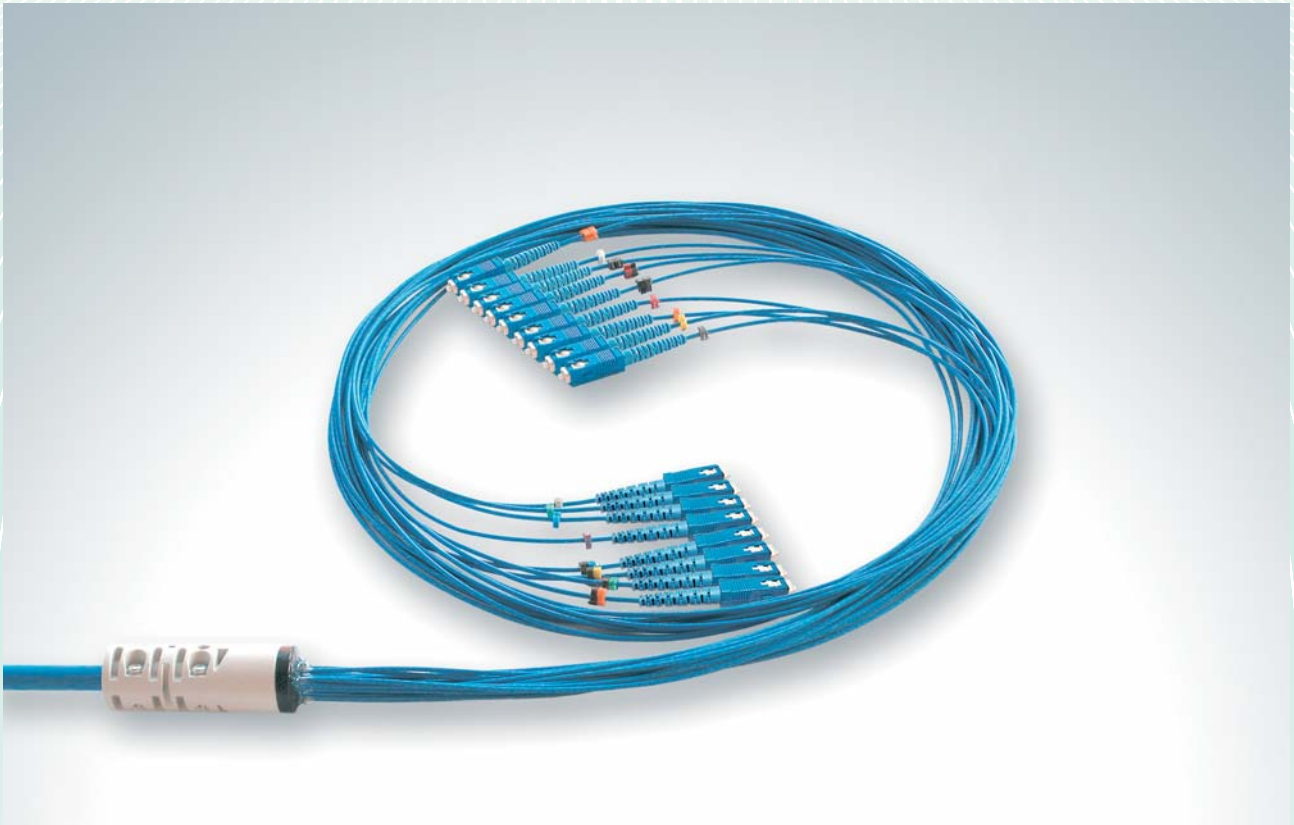




LightTech

Breakout Cables



Features

- Loose and stranded single cord structures for superior mechanical protection
- Aramid yarn reinforced single cord terminations
- Duplex sub-unit structure for MT-RJ connectors
- Flame retardant, Halogen free, Low Smoke sheaths
- Easy installation
- Any type of connector, PC and APC polishing

Specifications

- **Fiber type:** **Single Mode, Multi Mode 50/125, 62,5/125 μm**

- **Cable counts:** 4 to 24 fibers for stranded cords
8 to 30 fibers for loose structure

- **Insertion loss and Return loss:** According to connector specs

- **Operating temperature(*):** -10°C / +60°C

- **Storage temperature:** -30°C / +60°C

(*) except limitations by the cable

Ordering information

Code structure

